

“WESION”: AI-Powered Digital Intelligent Teaching Platform

Renmin University of China 2024



What is WESION ?



“WESION”: an AI-Powered Digital Intelligent Teaching Platform, aims to democratize education by offering a diverse range of online courses, e-books, and interactive learning materials to children aged 6-15, with a particular focus on regions characterized by lower education levels.

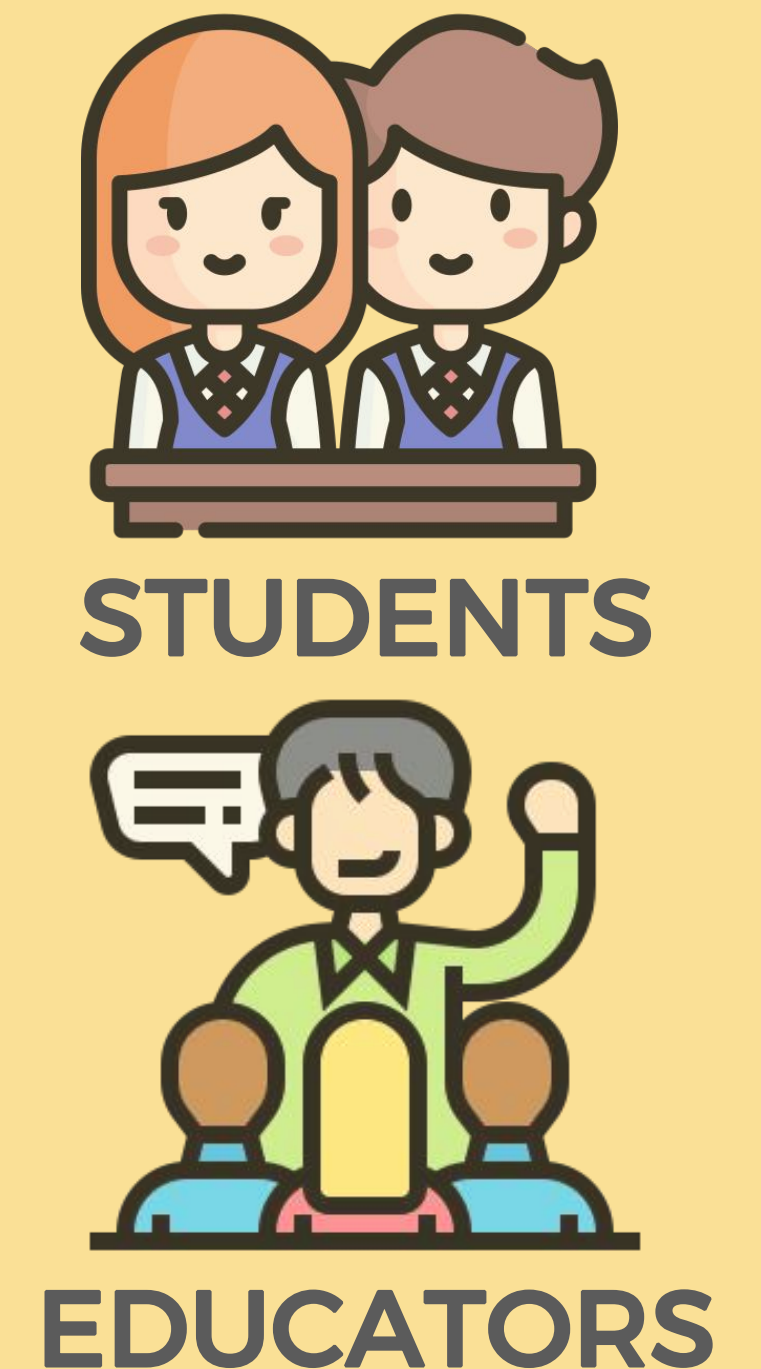
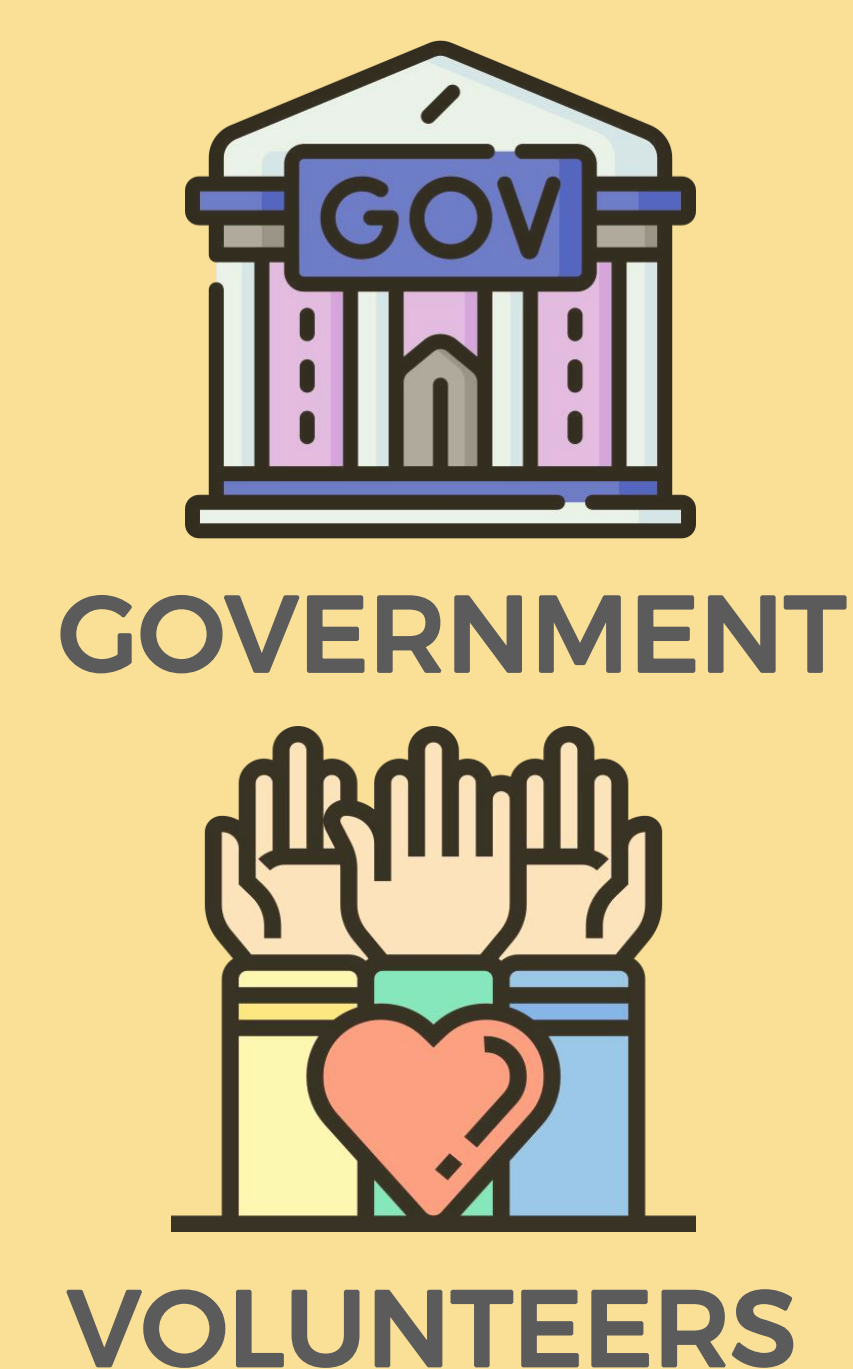
By using AI technology, the platform delivers intelligent course recommendations, personalized learning paths, and behavioral analysis to optimize learning outcomes. WESION will foster collaboration among stakeholders, drive collective efforts towards educational equity and excellence

Our Role & Accountability

- The organizer and operator, tasked with the design, development, operation, and maintenance of WESION.
- To create an intuitive and impactful platform that caters to the diverse educational needs of children in underserved regions.



Participating Entities



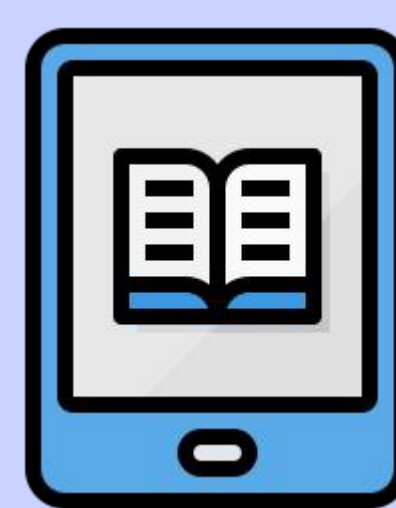
Platform Functionality Design

Online Courses



- Provide diverse teaching mediums
- Create online learning environments
- Offer rural students more space for autonomous learning

Online Books



- A multilingual reading list is provided, along with an accompanying intensive reading analysis

Virtual Venues



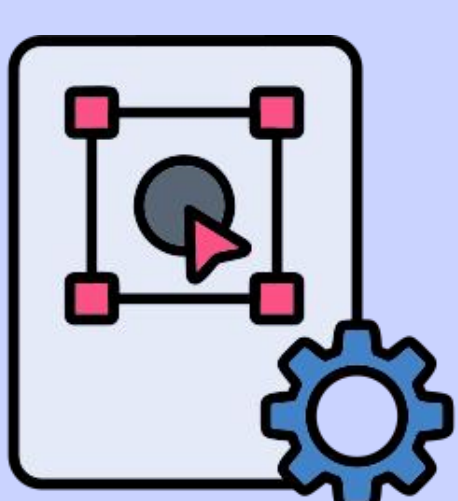
- Utilize panoramic virtual roaming systems & natural interactive operations
- Allow children view collections in museums with 360-degree panoramic rotation and 3D images

Q&A service



- Volunteers offer answers to children's questions via WESION
- Provide companionship to marginalized children which technology can not offer

Personalized Learning Plan



- AI algorithms drive intelligent course recommendations
- Facilitate personalized learning paths tailored to individual student needs
- Analyze learning behaviors to inform pedagogical strategies and interventions

Expected Rendering



Obstacles & Strategies

- **Mitigating Inaccuracies in AI Content Provision:**
 - ✓ Implementing a robust system of human oversight
- **Addressing the Lack of Smart Device Support:**
 - ✓ Establish physical community centers in targeted locations
 - ✓ Cooperate with local governments, NGOs, or private businesses
- **Overcoming Limited Electronic Device Operation Skills**
 - ✓ Integrate intuitive and user-friendly features, including AI-powered intelligent voice input functionality